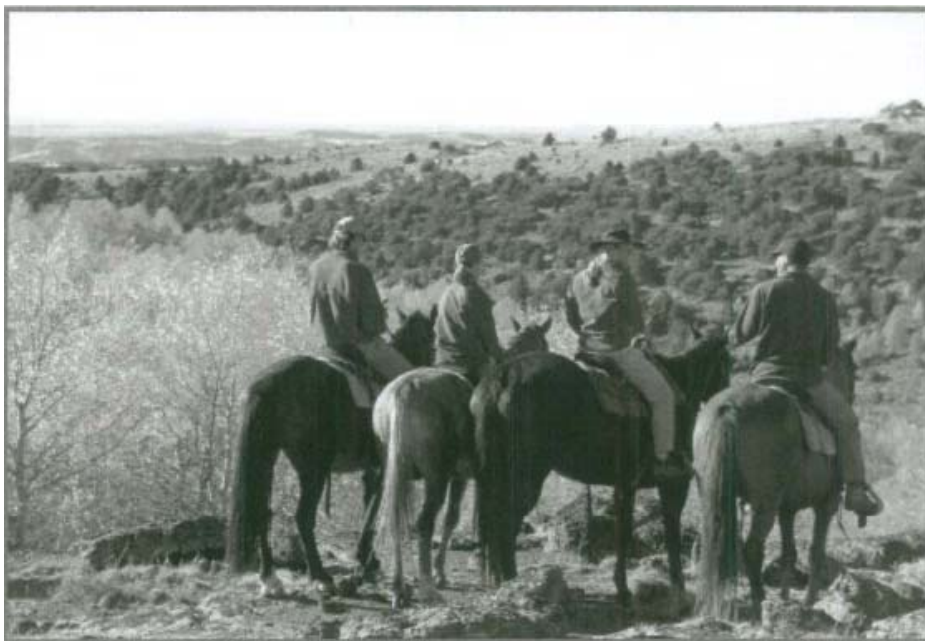


MT BALDY 80KM ENDURANCE RIDE



VENUE: TEPON EQUESTRIAN GROUNDS
LONGLANDS GAP RD, WONDECLA

DATE: 03rd & 04th APRIL 2010

VET: DR JOHN ROBERTSON

RIDES OFFERED: 80KM (SUNDAY 6.00 AM START)
40KM (SUNDAY 6.30 AM START)
20km (SUNDAY 7.00 AM START)

NOMINATIONS: Janet Fornier PH 07 40962777
Dale Anderson PH 07 40963012

EMAIL: jfornier@bigpond.net.au

ENTRY FEES:

80km \$73.00
40km \$58.00 *
20km \$30.00 *



*Plus Day Membership if not a member

AWARDS:

Completion Awards for successful riders
Fittest Horse Awards

RIDER DIVISIONS:

Intro & Training Riders (no weight division)
Juniors 17 yr or under (no weight division)
Lightweight - Less than 73 kg
Middleweight - 73 kg and over
Heavyweight - 91 kg and over



Once entered into a division there can be weight loss that would take you down a division you can increase your weight.

Please remember that Junior and Lightweight must weigh-in at completion of ride to enable weights to be calculated on fittest horse sheets.

TRACK DESCRIPTION: This ride follows tracks through the open forest country of the Great Divide There is very little road work mainly old logging trails that take you down into hidden valleys where the going is good. Some of the hills on Mt Baldy are a bit steep we have the one we call the ' Snowy Mountain Hill' lots of fun to ride down. There will be plenty of water on track due to recent heavy rains in the area.

- **REMEMBER YOUR LOG BOOK - NO BOOK, NO RIDE, NO ARGUMENT**
- **HELMETS ARE COMPULSORY**
- **BLUE RIBBONS MUST BE IN STALLIONS TAILS**
- **RED RIBBONS IN A TAIL OF A HORSE THAT MAY KICK**

We look forward to seeing you there!

